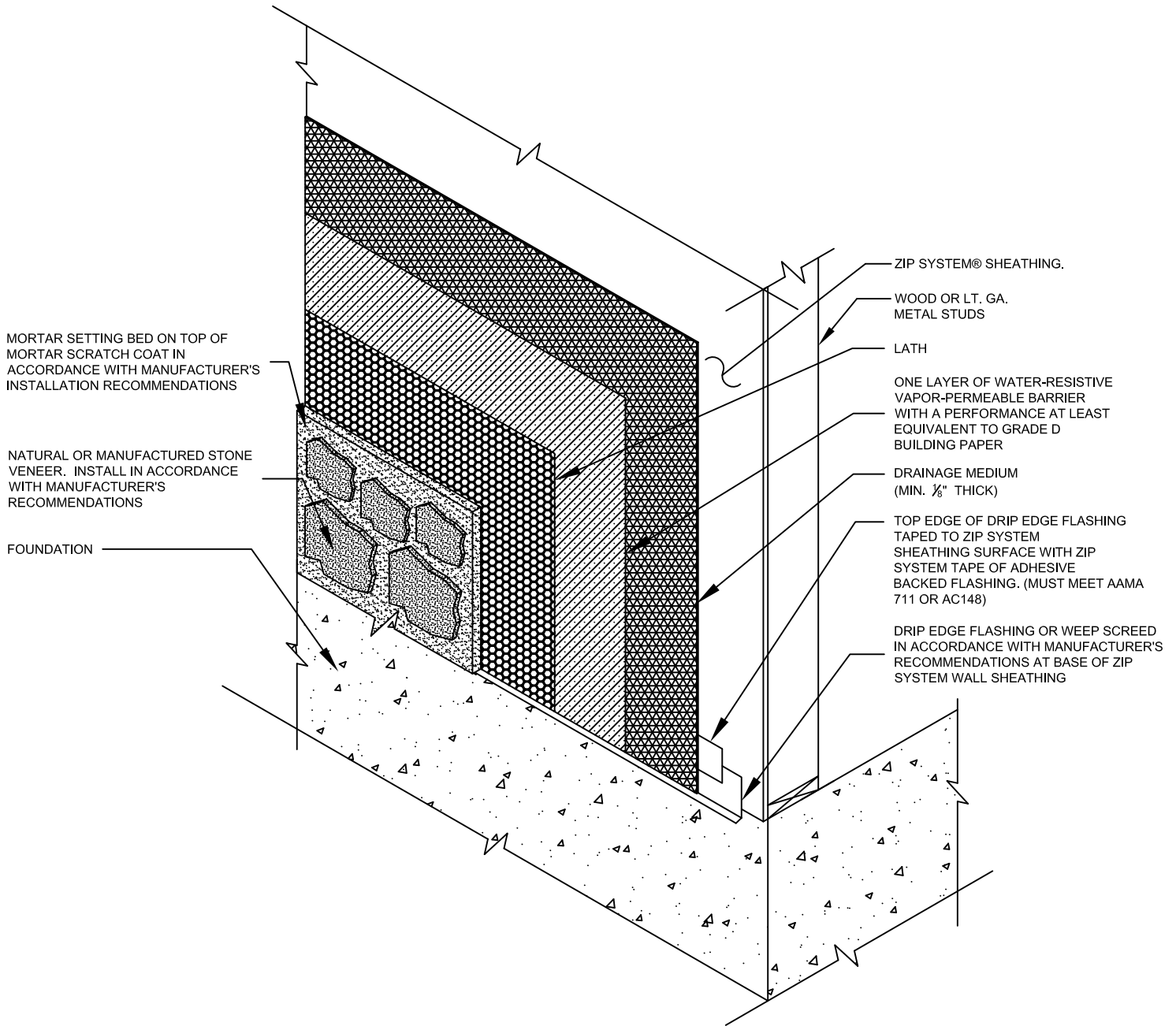


ZIP SYSTEM® SHEATHING W/ ADHERED STONE AT SLAB ON GRADE - OPTION B

S-1



*ZIP SYSTEM® SHEATHING IS APPROVED TO REPLACE THE FIRST LAYER OF A TWO-LAYER WATER RESISTIVE BARRIER SYSTEM.

DRAWING NOT TO SCALE

08-05-2015



Sales Office: 10925 David Taylor Drive
Suite 300 - Charlotte, NC 28262
Telephone: 800.933.9220 - www.zipsystem.com

another innovation from



These construction details are provided to assist in the installation of ZIP System® product(s) and may not apply to every situation. Manufacturer accepts no responsibility or liability for the use of these or other construction details.

ZIP SYSTEM® SHEATHING W/ ADHERED STONE AT SLAB ON GRADE SECTION VIEW - OPTION B

S-1

WALL ASSEMBLY

NATURAL OR MANUFACTURED STONE
LATH
ONE LAYER OF WATER RES. BARRIER
DRAINAGE PLANE (MIN. 1/8")
ZIP SYSTEM® SHEATHING*
WOOD OR LT. GA. METAL STUDS

TOP EDGE OF WEEP SCREED
TAPED TO WALL SHEATHING
WITH ZIP SYSTEM® TAPE OR
ADHESIVE BACKED FLASHING.
(MUST MEET AAMA 711 OR
AC148)

CODE-APPROVED WEEP
SCREED AT BASE OF WALL

FOUNDATION

MORTAR SETTING BED ON TOP OF
MORTAR SCRATCH COAT IN
ACCORDANCE WITH MANUFACTURER'S
INSTALLATION RECOMMENDATIONS

NATURAL OR MANUFACTURED STONE
VENEER. INSTALL IN ACCORDANCE
WITH MANUFACTURER'S
RECOMMENDATIONS.

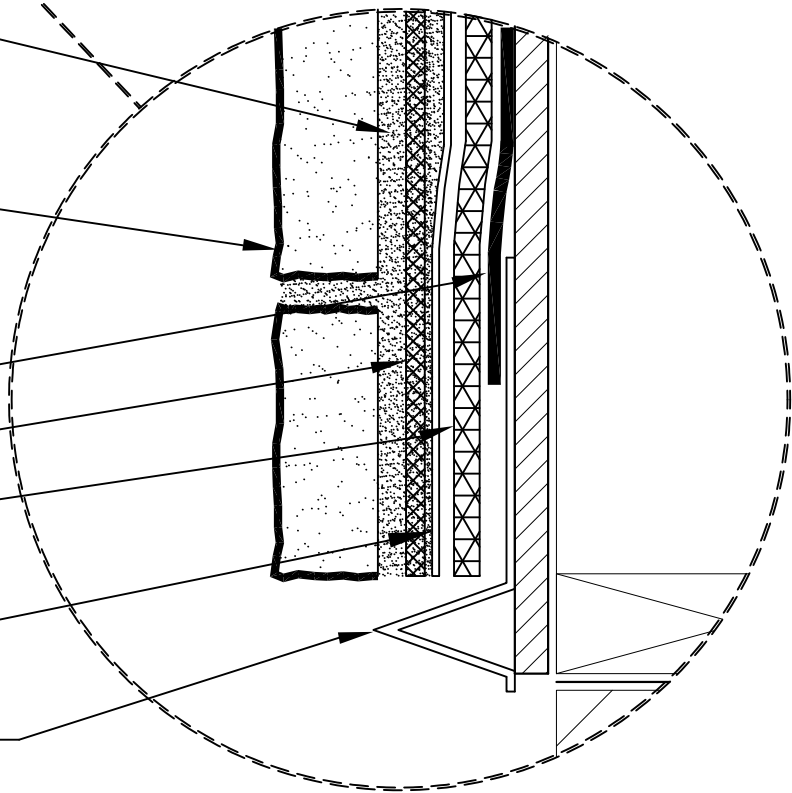
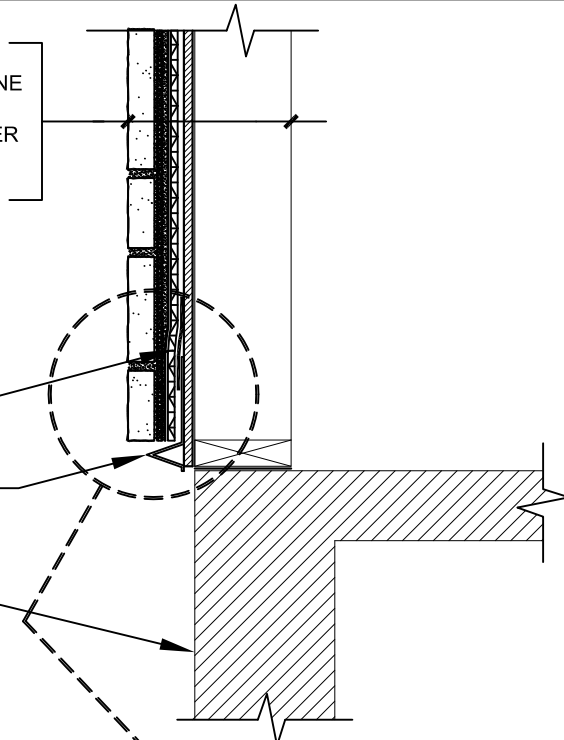
TOP EDGE OF WEEP SCREED
TAPED TO WALL SHEATHING
WITH ZIP SYSTEM® TAPE OR
ADHESIVE BACKED FLASHING.
(MUST MEET AAMA 711 OR
AC148)

LATH

MANUFACTURED FURRING STRIPS,
BATTONS OR CODE-RECOGNIZED
DRAINAGE MEDIUM (MIN. 1/8" THICK)

ONE LAYER OF WATER-RESISTIVE
VAPOR-PERMEABLE BARRIER WITH A
PERFORMANCE AT LEAST EQUIVALENT
TO GRADE D BUILDING PAPER

CODE-APPROVED WEEP
SCREED AT BASE OF WALL



*ZIP SYSTEM® SHEATHING IS APPROVED TO REPLACE THE FIRST LAYER OF A TWO-LAYER WATER RESISTIVE BARRIER SYSTEM. **DRAWING NOT TO SCALE**

08-05-2015



Sales Office: 10925 David Taylor Drive
Suite 300 - Charlotte, NC 28262
Telephone: 800.933.9220 - www.zipsystem.com

another innovation from



These construction details are provided to assist in the installation of ZIP System® product(s) and may not apply to every situation. Manufacturer accepts no responsibility or liability for the use of these or other construction details.